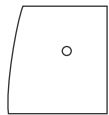


BEFORE YOU BEGIN CHECKLIST



Prior to installing your new Water Meter to your Geo-Loop Grouter, confirm that you have received all of the items required for installation. Many components will come pre-assembled to decrease the likelihood of loss or damage during packing and shipping. If you believe any parts are missing call (877) 580-9348.

TOOLS PROVIDED



STEEL TEMPLATE

The Steel Template is used to mark where the $\frac{1}{4}$ " pilot hole needs to be drilled on the top of the tank.



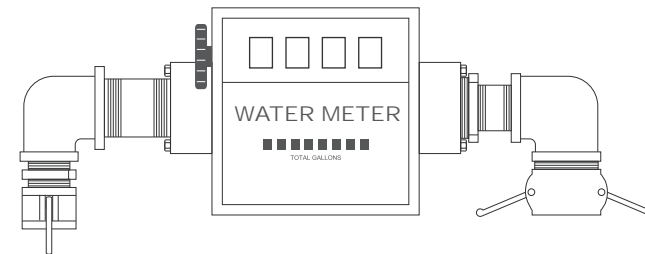
HOLE SAW

The Hole Saw is used to drill the $1\frac{3}{8}$ " hole through the top of the mixing tank.

OTHER TOOLS YOU WILL NEED

- | | |
|--|--------------------------------------|
| $1\frac{3}{4}$ " Pipe or Crescent Wrench | $\frac{1}{4}$ " Drill Bit |
| Center Punch | $\frac{1}{2}$ " Variable-Speed Drill |
| $\frac{7}{16}$ " Wrench | Cardboard |
| $\frac{1}{2}$ " Wrench | Tape |

WATER METER ASSEMBLY



MALE CAM LOCK ASSEMBLY



Male Cam Lock
x 1



$1\frac{3}{4}$ " Washer
x 1

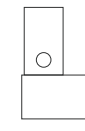


$1\frac{3}{4}$ " Nut
x 1

SUPPORT ASSEMBLY



Support Arm
x 1



Support Bracket
x 1



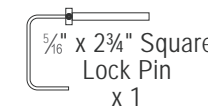
$1\frac{1}{2}$ " U-Bolt
x 1



$\frac{1}{2}$ " Washers
x 2



$\frac{1}{2}$ " Locking Nuts
x 2



$\frac{5}{16}$ " x $2\frac{3}{4}$ " Square
Lock Pin
x 1



$\frac{7}{16}$ " Bolts
x 2



$\frac{7}{16}$ " Locking Nuts
x 2

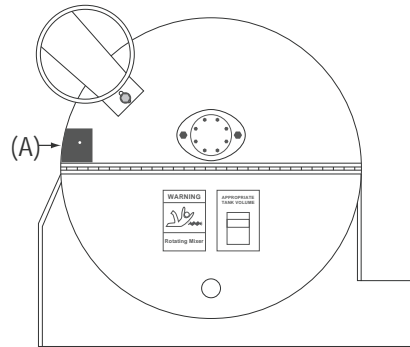
WATER METER INSTALL GUIDE



These Instructions describe the general process for installing a Water Meter Assembly to a Geo-Loop Grouter. If you have questions or think you are missing components please call GeoPro at (877) 580-9348.

STEP 1

Tape a piece of cardboard layered with paper towels inside the tank 6-8" below the lid to catch metal cuttings from drilling.



STEP 2

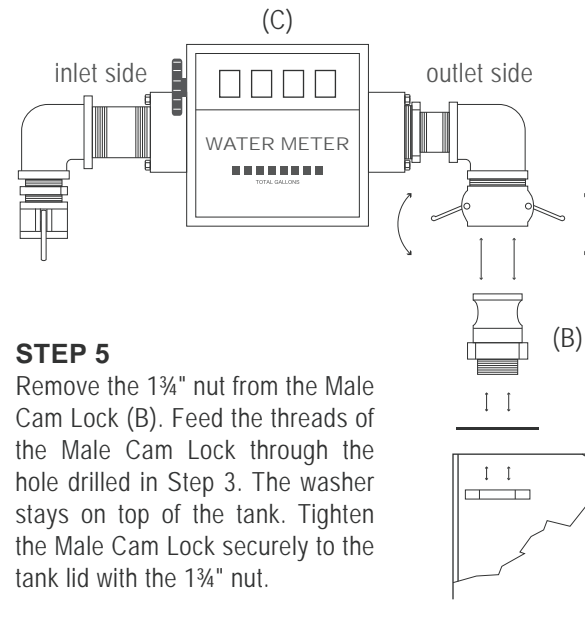
Locate the center for 1 3/8" hole by placing the enclosed Steel Template (A) on top of the tank as shown in the diagram above. Use a center punch to mark the center of the 1/4" template hole. Remove template once drill location is marked.

STEP 3

Drill the 1 3/8" hole using the hole saw provided and a variable speed drill on its slowest setting. Use plenty of lubricant. Drill slowly.

STEP 4

Remove the Male Cam Lock (B) from the outlet side of the Water Meter Assembly.



STEP 5

Remove the 1 3/4" nut from the Male Cam Lock (B). Feed the threads of the Male Cam Lock through the hole drilled in Step 3. The washer stays on top of the tank. Tighten the Male Cam Lock securely to the tank lid with the 1 3/4" nut.

STEP 6

Connect Water Meter Assembly (C) to Male Cam Lock (B). Flip tabs "up" on the Male Cam Lock (B) to make entire unit self-supporting.

STEP 7

Attach the Support Arm (D) to the 1 1/2" x 3" coupling on the inlet side of the water meter using the 1 1/2" U-bolt (E). Leave the U-bolt loose for final alignment.

STEP 8

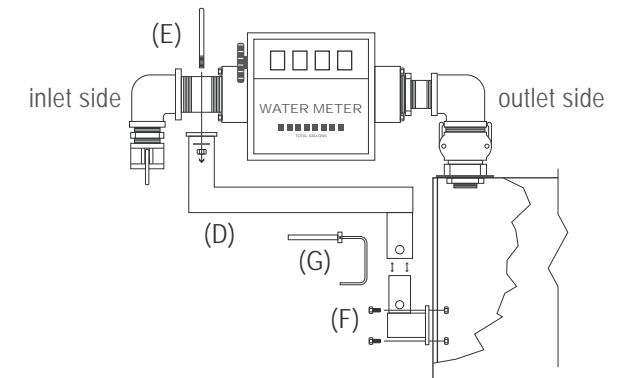
Connect the Support Bracket (F) to the Support Arm (D) with the 5/16" x 2 3/4" Square Lock Pin (G).

STEP 9

Slide the Support Assembly (D, E & F) towards the tank until the Support Bracket (F) makes contact. Secure the Support Assembly to the Water Meter by tightening the 1/2" locking nuts with washers on the U-Bolt (E).

STEP 10

Use a center punch to mark the center of the mounting holes of the Support Bracket (F) on the tank. Drill mounting holes in the side of tank using a 1/4" bit. Use plenty of lubricant. Drill slowly.



STEP 12

Secure Support Bracket (F) with (2) 7/16" bolts and 7/16" locking nuts.

STEP 13

Remove cardboard and vacuum out any metal cuttings from the inside of the tank.

WARNING: DO NOT EXPOSE TO TEMPERATURES BELOW 32°F (0°C).

TO REMOVE METER:

Release Male Cam Lock (B) and remove 5/16" x 2 3/4" Square Lock Pin (G) from Support Bracket (F). DO NOT LET METER FREEZE! INTERNAL PARTS WILL BE DAMAGED!